



70 Horseferry Road, Westminster  
London SW1P

GARTONJONES.COM



70 Horseferry Road, Westminster  
London, SW1P

GARTON JONES.COM

49 Marsham Street Lettings:  
London +44 (0) 20 7340 0480  
SW1P 3DP westminster@gartonjones.com  
www.gartonjones.com

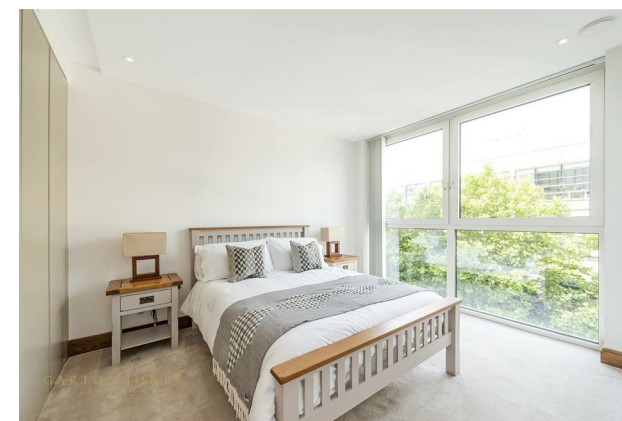
£1,325 Per Week

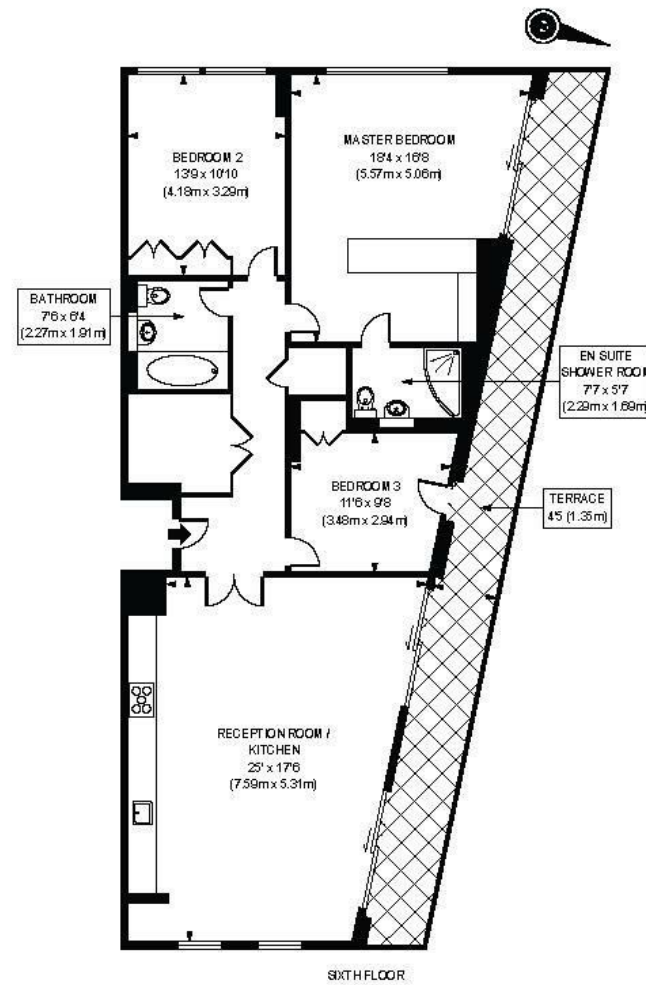
We are pleased to offer this bright 3 double bedroom apartment positioned on the 6th Floor of this popular luxurious development located in the heart of Westminster just moments from the River Thames. This spacious apartment of approx. 1244sq.ft (115.61sq.m) comprises of a dual aspect open plan reception room with a smart integrated kitchen with Miele appliances, access to a large private terrace, 2 luxury bathrooms (1 en-suite), ample storage and secure underground parking. Residents benefit from an array of amenities including a 24 hour concierge, a fully equipped fitness suite and access to an attractive landscaped courtyard garden with water feature. The Courthouse is fortunate to be in a superb Westminster location surrounded by an array of iconic London landmarks with Big Ben, Houses of Parliament and the Tate Gallery all on your doorstep. A plethora of hotels, eateries and retail shops which include Osteria dell'Angolo, The Goring, St Ermins', St James Conrad and The Ivy Victoria. You are just a short walk from the Chelsea College of Arts and easy tube access to LSE and King's College. Garton Jones are located next to the development so are readily available for viewings.

\*\*Please note that the furniture may differ to that shown in the current photos

Council Tax Band G (London Borough of Westminster)  
Minimum Term 12 Months  
Security Deposit 6 Weeks  
EPC B (84)

- 3 Bedroom Apartment
- 1244 Sq.Ft (115sq.m)
- 6th Floor (Lift)
- Large Bright Dual Aspect Reception Room
- Modern Integrated Kitchen
- 2 Luxury Bathrooms (En-Suite To Master)
- Large Private Terrace With Views
- Secure Underground Parking
- Resident's Gym & 24 Hour Concierge
- Walking Distance to Westminster, St James Park and Victoria Station





APPROX. GROSS INTERNAL FLOOR AREA 1244 sq. ft / 115.61 sq. m



